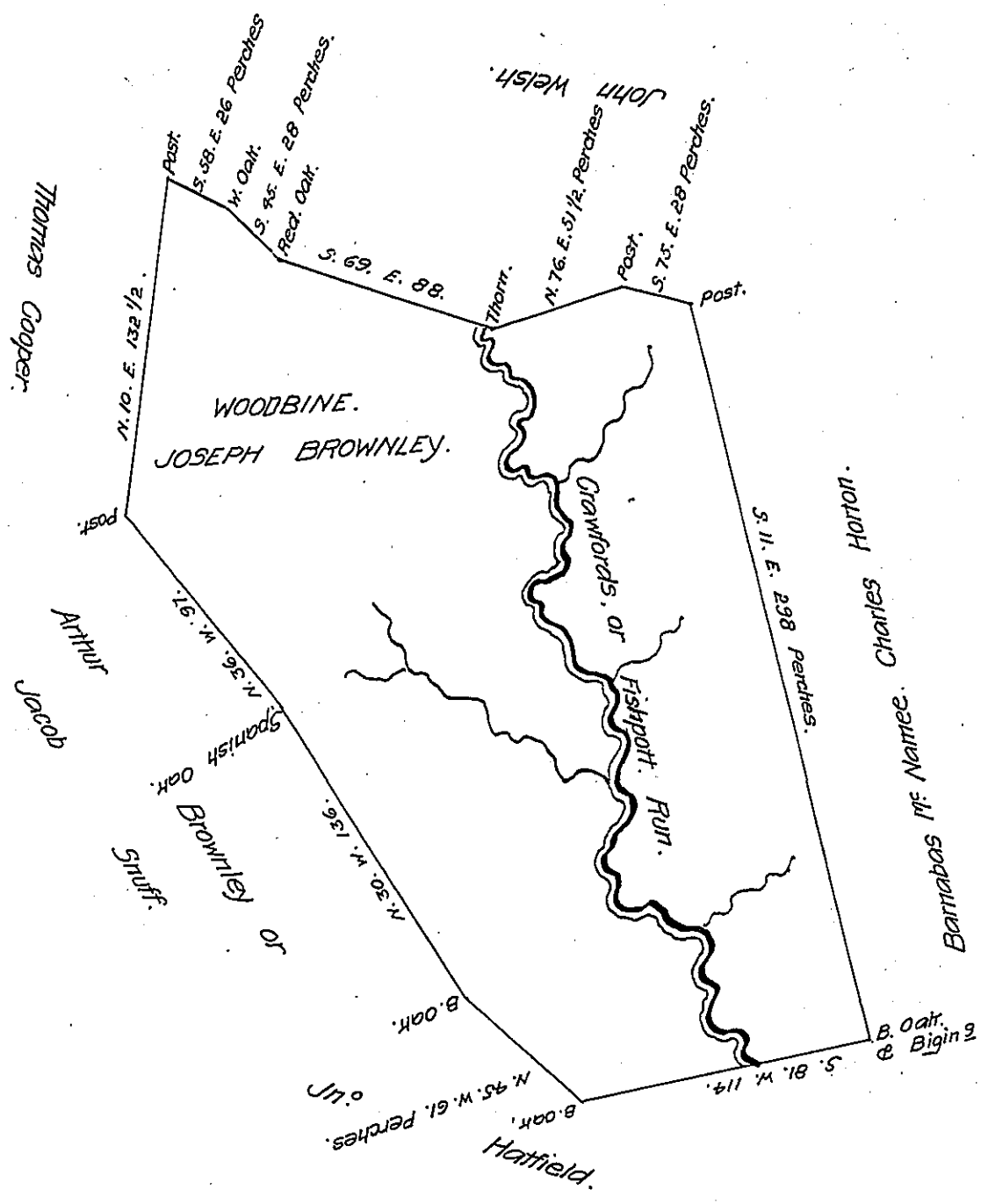


FORM NO 1.



The above is a Draught of a Tract of Land Situate on Fishport Run in Washington County called Woodbine Containing 382 1/2 Acres of Land Surveyd March the 28th 1785. In pursuance of a Certificate ~~of a Certificate~~ granted to Charles Madden of which the following is a Copy. We the Commissioners appointed for adjusting the Claims to unpatented Lands in the Counties of Monongahela Yohogania & Ohio do hereby Certify that Charles Madden is entitled to four hundred Acres of Land in the County of Monongahela on Crawfords Run to include his Settlement made in the Year of our Lord One thousand seven hundred and seventy five. Given under our hands at Redstone old fort the 14th Day of December 1779 in the fourth y^r of the Com^o Wea.

Francis Peyton
 Phil. Pendleton
 Joseph Holmes

Test. James Chew. Clk. Com.
 John Lukens Esq^e Sv^r G!

Jr^o Hoge D. S.

IN TESTIMONY that the above is a copy of the original remaining on file in the Department of Internal Affairs of Pennsylvania, made conformably to an Act of Assembly approved the 16th day of February, 1833, I have hereunto set my Hand and caused the Seal of said Department to be affixed at Harrisburg, this twelfth day of March 1908.

Henry Howell
 Secretary of Internal Affairs.